

La Kumsal

SUSTAINABILITY
REPORTING

(2024-
2025
Year)

Contents

- 1. Report About 2
- 2. Facility Introduction And Facility Features 3
- 3. Sustainability Team 4
- 4. Environment The effects of Reduction 5
- 5. Employee And Study Life 6
- 6. Cultural Studies 7

1. Report About

The progress we have made in line with our sustainability efforts is thanks to our management, employees, guests, our suppliers And other all our partners with to share And like this This at the point We aim to increase the awareness we create and transform it into common goals and successes.

This prepared sustainability report 2024 in the year contains the data .

Our Mission And Our vision;

- Our guests comfortable will environments create.
- More hot And sincere One environment by presenting our guests from our hotel pleased their separation to ensure.
- Each our guest positive marks leaving holiday the possibility of them to keep alive.
- Our guests their loyalty by winning Them again more Beautiful One to welcome in a way .
- In our services quality -most top to the point be able to carry we are loaded -most big is our mission.

Our priority; continually to develop open to be, our guests need And expectations in line with service is to be able to give. Service And quality at the point our guests satisfaction providing responsibility all Our goal is to ensure that our guests of all ages have a pleasant time by offering unique services.

Our guests -most Good in this way to host -most important principle And is one of our goals.



2. Facility Introduction and Facility Features

La Beach Hotel, Cukurbag peninsula, In Kaş/Antalya exists.

Hotel Information:

Hotel Name: La Beach Hotel

Category: 3 Stars

Region: Kaş/ANTALYA

Phone: 0 242 836 34 04

Total Rooms: 26 rooms

Where it is located Location: La Beach Hotel; Dalaman To the airport 152 km, Antalya To the airport 207 km It is 25 km from the unique Kaputaş beach, 42 km from Kekova and 53 km from Demre.

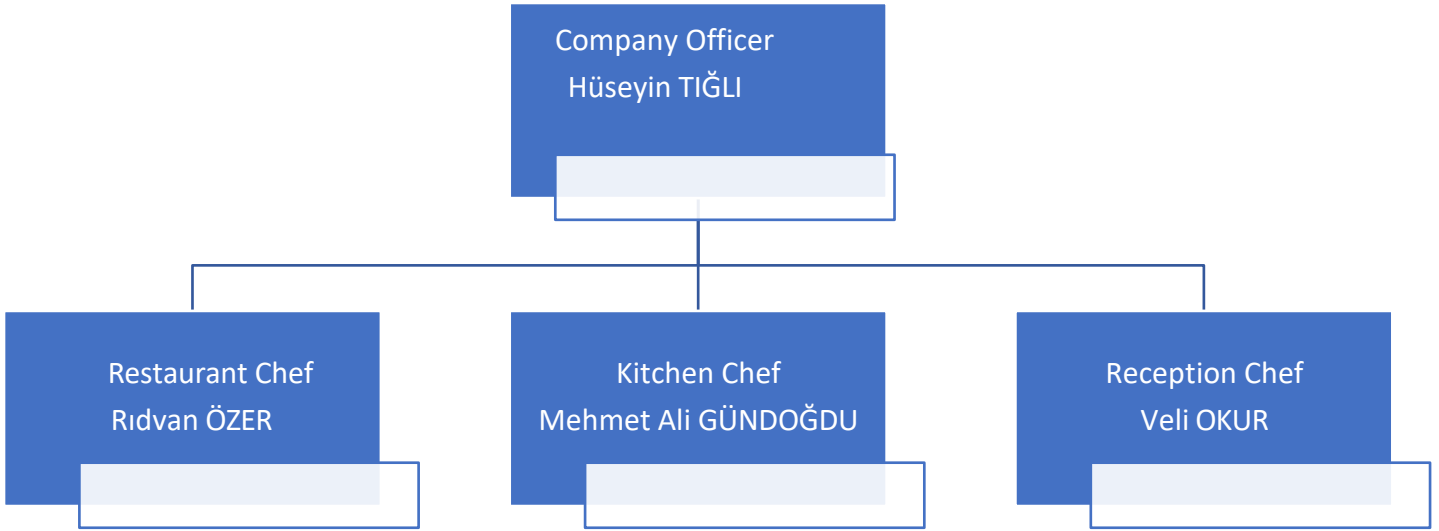
Address: Andifli , Beyhan Cenkçi Street, No:74 Eyebrow / ANTALYA

Telephone: 0 242 836 34 04

Email: info@lakumsal.com

Website: www.lakumsal.com

3. Sustainability The team



4. Environment The effects of Reduction

THIS AND WASTEWATER MANAGEMENT

This Consumption : The facility This need network from the water is provided.

Domestic Wastewater : At the facility consisting of domestic qualified waste water Asat sewerage to the line Industrial Wastewater: There is no industrial wastewater generation.

Other Waste water : At the facility cooling water, bluff water etc. There is no formation .

Wastewater Purification Facility About Information : At the facility waste This purification facility Internal Monitoring: Since there is no wastewater treatment plant, there is no internal monitoring.

Underground Water Monitoring : Place six water use There is no.

WASTE MANAGEMENT

General Waste

-Domestic qualified waste; Eyebrow Municipality by is being taken.

-Back Recyclable Wastes; Paper - Cardboard, Plastic, Metal, Pine aspect in our facility collected. Authorized licensed to the company delivered .

-Medical waste; Official licensed to the company is given.

-Dangerous waste; Official licensed to the company is given.

-Vegetable waste oils; MOTAT over licensed firm with is being sent.



To the environment what we did effects We determine And control under We are taking.

☒ Pollution with relating to risks urgent situations (fire, explosion, flood, earthquake, leak, etc.) We are prepared And legal regulations We are sleeping.

☒ Our waste to the minimum to download, pollution at the source to prevent, energy productive to use and we strive to reduce the environmental impact of our activities.

☒ Waste decomposition And waste amount of reduction, natural resources productive use in their activities we are constantly improving our environmental performance.

☒ Waste back transformation And disposal in the phase follow-up we are doing.

CHEMICALS MANAGEMENT

At the facility floor in its cleanliness And kitchen, restaurant, bar in their cleaning, washing up And washing in their machines, ice There is chemical use in the machine.

Used chemicals MSDS forms recruitment has been done And information in line with storage conditions are complied with.

ENERGY MANAGEMENT

In use the one which... lighting, air conditioning, irrigation etc. automation thanks to their systems

saving possibilities can be created. Productive, economical, environmentalist, new technology their products supply

It is aimed to have a positive effect on energy values by ensuring that

NOTLAR	2025								
SU SARFIYATI TAKİP TABLOSU									
Su Kullanım kaynakları (metreküp) (Su kullanım miktarları fatura ve sayaçlardan alınabilir)	Ocak	Şubat	Mart	Nisan	Mayıs	Haziran	Temmuz	Ağustos	Eylül
Toplam Alanlar (m3)	249	78	180	389	361	501	527	653	
...									
...									
Aylık Kullanılan Toplam Su Miktarı (m3)	249	78	180	389	361	501	527	653	0
Aylık toplam konaklayan misafir*geceleme sayısı (hesaplama detayı notlar kısmındadır)	104	86	138	151	253	479	650	762	
Misafir/gece başına kullanılan su miktarı (m3su/Misafir.Gece)	2,39	00001	1,304347826	2,57615894	1,42687747	1,045929019	0,810769231	0,856955381	

ELEKTRİK TÜKETİM TAKİP TABLOSU

Elektrik tüketim alanları (KWH) (Elektrik kullanım miktarları fatura ve çıldan alınabilir)	Ocak	Şubat	Mart	Nisan	Mayıs	Haziran	Temmuz	Ağustos	Eylül
İlam Alanlar (KWH)	557,361	303,374	280,487	305,362	448,394	503,983	760,63	1074,457	1076,511
İk Kullanılan Toplam Su Miktarı (m3)	557,361	303,374	280,487	305,362	448,394	503,983	760,63	1074,457	1076,511
k toplam konaklayan misafir*geceleme sayısı (hesaplama detayı notlar kısmındadır)	104	86	138	151	253	479	650	762	443
afir/gece başına kullanılan su miktarı (Elektrik/Misafir.Gece)	5,36	00004	2,032514493	2,022264901	1,7723083	1,052156576	1,1702	1,410048556	2,430047404

	2025 yılı tüketim (gr)	2025 yılı kişi geceleme	Kişi Başı Kullanım (gr)
 Şampuan	25000	3125	8
Duş Jeli	23500	3125	7,52
Saç Kremi	21000	3125	6,72
	2025 yılı tüketim (gr)	2025 yılı kişi geceleme	Kişi Başı Kullanım (gr)
 Hk Kişi Başı Kimyasal tüketimi (kg)	35000	3125	11,2
Çamaşırhane Kişi Başı Kimyasal tüketimi (kg)	31500	3125	10,08
Stewarding	12500	3125	4

CHILDREN'S RIGHTS POLICY

Children are entrusted to us as future generations. It is our primary responsibility to recognize them as individuals, respect their rights, and protect them against all forms of psychological, physical, commercial, and other exploitation.

To ensure this;

- We do not allow child labor in our own institutions and expect the same sensitivity from all our business partners.
- We provide environments/opportunities that contribute to the development of children within the business, where they can express their thoughts, wishes and feelings freely and feel free and comfortable.
- We provide training to our employees on preventing and recognizing child abuse.
- We ensure that children are under adult supervision in the activities they participate in.
- We organize trainings and support relevant projects to raise awareness about the protection of children's rights.
- When we witness suspicious activities involving children, we first inform the hotel management and, if necessary, seek assistance from official institutions.

ENVIRONMENTAL PROTECTION AND WASTE MANAGEMENT POLICY

We protect the environment in our business, prevent its pollution, and attach importance to its protection by reducing our negative impact on the environment.

For this;

- We comply with legal regulations and try to reduce our environmental impact.
- We take care to effectively separate our waste according to its source, groups and hazard classes.
- We know that using hazardous substances and chemicals only when necessary and in the required quantities will reduce both the negative impact on the environment and the amount of waste,
- We contribute to protecting nature by choosing "recycling" and "environmentally friendly" labels for the materials we purchase in our business. We strive to create reuse opportunities.
- We use disposable materials such as paper, napkins, toilet paper and packaging as much as necessary and take care to leave less waste in nature,
- We store wastes correctly, in separate areas according to their characteristics, deliver them to licensed/authorized companies without exceeding legal storage time limits, and maintain records.
- We strive to use water, energy, and all natural resources economically. We share this sensitivity with our employees, guests, and suppliers.
- We measure our performance in environmental management, monitor this data with targets and strive to improve our performance.
- We aim to educate our employees about the environment and increase their awareness.

WOMEN'S RIGHTS AND GENDER EQUALITY POLICY

We attach importance to gender equality in our business.

- We ensure the health, safety and well-being of all our employees, regardless of gender.
- We support women's participation in the workforce in all our departments and offer equal opportunities.
- We act with the policy of "equal pay for equal work" without gender discrimination.
- We distribute tasks by observing the principle of equality.
- We provide the necessary environment for equal benefit from career opportunities.
- We create education policies and support women's participation and awareness raising.
- We create a working environment and practices that maintain work-family life balance.
- We support women in company management and offer equal opportunities.
- We do not allow women to be subjected to any form of abuse, harassment, discrimination, suppression, coercion, slander, etc. We are always aware of the value they add to the world and our institution, and we support their existence.

5. Employee And Study Vital

Our employees chemical usage, to the environment effects And waste about We train.

Our employees And our guests to the environment opposite sensitive they are about incentive does, to our employees We develop them by providing training on environmental awareness and efficient use of energy.

Tiğli denizcilik Turizm Taş. Emi. San.Tic. Ltd Şti

Sayı : 01

Konu : Personel Atama

01/10/2025

Kurumumuzda Ön Büro Departmanında Resepsyonist olarak görev yapan Veli İslam Okur T.C 40510999102 , 05/10/2025 tarihi itibarıyla Ön Büro sorumlusu görevine atanmıştır.

İlgili personelin atama sonrası tüm yetki ve sorumlulukları, bağlı bulunduğu birim amirliğine karşı yürütmesi gerekmektedir. Gerekli işlemlerin yapılmasını rica ederim.

(Ad Soyad) Hüseyin Tiğli

(Ünvan) İşletme Müdürü

(İmza)



To our employees;

Environment Education, OHS Training, Fire, Sustainability Their training has been given.



OZEL
YOĞUN OTEL SAĞLIK VE GÜVENLİK BİRİMİ
ORTAK SAĞLIK VE GÜVENLİK BİRİMİ

YANGIN TATBİKAT RAPORU

İŞYERİ ÜNVANI-ADRES : LA KUMSAL OTEL
TATBİKAT ADI : MUTFAK YAĞ YANGINI
TATBİKAT TARİHİ : 31.07.2025
TATBİKAT TÜRÜ : YANGIN
TATBİKATA KATILAN KİŞİ SAYISI : 15
TOPLANMA YERİNDEKİ SAYIM SONUCU : 15
TATBİKAT BAŞLANGIÇ SAATI : 09:30
TATBİKAT BİTİŞ SAATI : 09:50
TATBİKATIN KONUSU : MUTFAK
TATBİKATIN AMACI : Bu tatbikat, 6331 sayılı İş Sağlığı ve Güvenliği Kanunu ve 12/2024 tarihli Binaların Yangından Korunması Hakkında Yönetmelik Uygulama Kilavuzu'nun 129. maddesi çerçevesinde yapılmaktadır. Tatbikatın amacı; tesis çalışanlarının Yangın ve Acil durumda doğru şekilde hareket etmesini sağlamak, Tahliye, Yangına ilk müdahale ve ilk yardım süreçlerini uygulamalı olarak test etmek ve gerçek bir yangın anında oluşabilecek risklere karşı hazırlanmasını sağlamaktır.
TATBİKATA KULLANILAN EKİPMANLAR : - PORTATİF F TİPİ YANGIN SÖNDÜRÜCÜ
- YANGIN ALARM SİSTEMİ
- İLK YARDIM ÇANTASI

1. TATBİKAT SENARYOSU

Senaryo Başlangıcı:

31 Temmuz 2025 saat 09:30 'ta otel mutfağında, elektrikli plate'in aşırı ısınması sonucu kızartma yağı alev alır. Alevler hızla davlumbaz içine sıçırır ve baca hattına yayılır. Yoğun duman restoran kısmına ulaşır, yemek yiyen misafirler panikler.

Olay Gelişimi:

- 09:30** : Mutfak çalışanı ve **SÖNDÜRME EKİBİNDEN – MUAMMER GÜNDÜZ** plate den çıkan alevleri fark eder "YANGIN VAR,YANGIN VAR,YANGIN VAR" diye bağirmaya başlar.
- 09:31** : O sırada resepsiyonda bulunan Mehmet Neğiş,Resepsiyonda bulunan yangın algılama sistemi devreye girer ve alarm çalmaya başlar.Mehmet Neğiş yangın paneli üzerinde MUTFAK ta yangın olduğunu görür ve söndürme ekibini mutfaka yönlendirir.Yangının büyüme ihtimali söz konusu olduğu için 112'yi arayarak itfaiye'ye yangın ihbarında

(Otel Adı/Logosu)	EĞİTİM KATILIM FORMU	Doküman No:	Yayın Tarihi:
		Revizyon No:	Revizyon Tarihi:
		Sayfa No:	
Eğitimin Konusu:	Kadın hakları ve Çocuk İstismarı		
Çarım Tarihi ve Saati:			
Eğitimin Amacı:	Bilgilendirme Eğitimi		
Eğitimin Hedefi:			
Eğitimi Veren Yetkili:			
Eğitim Katılım Sayısı:			

SIRA	KATILIMCININ ADI SOYADI	GÖREVİ	İMZA
1	İsmail ÖZKALE	Resepsiyon	
2	Fatma AKKAR	H.K	
3	Çiğdem TAYDİMİR	H.K	
4	H.S. İSMAİL BİRİZ	F.B	
5	Alihan ÖZEL	F.B	
6	Gülşüm GEDİN	Mutfak	
7	Yakup KARACAN	Mutfak	
8	Muhammed GÖNDÜR	Mutfak	
9	Alihan AKSÖĞÜDİR	F.B	
10	Hüseyin DİĞER	Mutfak	
11	Muammer GÜNDÜZ	Mutfak	
12	Muammer GÜNDÜZ	Güdümlü	
13	Alihan BİRAL	F.B	
14	Muammer GÜNDÜZ	F.B	
15	Sevval ÇELİK	Resepsiyon	
16	Mehmet Neğiş	Resepsiyon Güce	
17	Yakup KARACAN	Gama fırınları	
18	Demir Bozdoğan	Mendanci	
19			
20			
21			
22			
23			
24			

Av. Gökberk TASKIN
Etiler Mah. 332 Sk. Anel İş Merkezi
K:4 D:13 Mutfak / LAZALIA
İzmir / 0531 12 99 66
Düzen Vd: 13/08/2024

Hazırlayan: Kontrol Eden: Onaylayan:



2025 YILI MÜZİK LİSANS BELGESİ

**TIĞLI DENZ.TAŞ.EML.TUR.İNŞ.SAN. VE TİC.LTD.ŞTİ. – LA
KUMSAL HOTEL**
ANDIPLI MHL.BEYHAN CENKCI CAD. NO:74

MSF VE MÜZFED FEDERASYONLARI REPERTUVARLARININ YUKARIDA BELİRTİLEN
KONAKLAMA TESİSİNDE 2025 YILI İÇERİSİNDE UMUMA İLETTİLMESİ İÇİN İŞBU
"MÜZİK LİSANS BELGESİ" (*) DÜZENLENMİŞTİR.

*Bu Müzik Lisans Belgesine konu müzik kullanım izninin kapsamı MSF ve MÜZFED Federasyonları ile konaklama tesisi
arasında imzalanan sözleşmede belirtilmiştir.

BELGE NUMARASI : 2025 / 2023-01950
DÜZENLEME TARİHİ : 10.04.2025
GEÇERLİLİK DÖNEMİ : 2025 Yılı
KURULUŞ TÜRÜ : 3 Yıldız
ODA SAYISI : 26



MSF
Müzik Sektöründe Esar Sahipleri
Federasyonu

MÜZFED
Müzik Sektöründe Bağlantılı Haklar
Federasyonu



BEDENSEL ENGELLİ BİREYLERE UYGUNLUK:

Otelimiz engelli bireylerin kullanımı için uygun değildir.

Otel girişimiz engelli bireylerin kullanımına uygun değildir.

Hiçbir odamızın banyo kısımlarında engelli misafirlerimiz için ek donanım bulunmamaktadır.